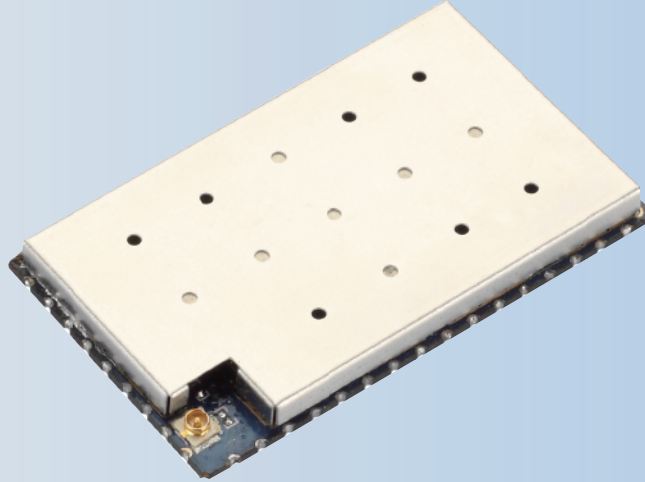


# Linux, WiFi, IoT Embedded Module

HE



## OVERVIEW:

Dragino HE is a minimal Open Source Linux system with 400MHz CPU speed. It supports 150M 2.4G WiFi and compatible with 802.11b/g/n. HE has rich interface such as Ethernet, USB, UART and quantity of GPIOs. HE is of small outline package and can be used for various IoT solutions.

HE runs a customized Open Source OpenWrt system. There are lots of examples and documents on how to design the software /hardware around HE IoT module. With HE, developers can release their IoT, WiFi or Linux products very fast and stable.

## Features:

- Open source Linux (OpenWrt) inside
- Low power consumption
- Compatible with Arduino IDE 1.5.4 or later, user can program, debug or upload sketch to Arduino board via Arduino IDE.
- Managed by Web GUI, SSH via LAN or WiFi
- Software upgradable via network
- Built-in web server
- Support internet connection via LAN port, WiFi or 3G dongle
- Failsafe design provides robustly system

## Applications:

- Internet of Things
- Mesh WiFi
- Industrial Control
- Voice over IP
- 3G/4G router

## Specification:

- Processor: 400MHz, 24K MIPS
- Flash: 16MBytes
- RAM: 64MBytes
- Power Input: 3.3v
- 2 x 10M/100M RJ45 connector
- 1 x USB 2.0 host connector
- 15 multiplex GPIOs
- 150M WiFi 802.11 b/g/n
- I-Pex connector or optional Antenna pin
- Frequency range: 2.4~2.4835GHz
- Modulation: BPSK, QPSK, CCK and OFDM (BPSK/QPSK/16-QAM/ 64-QAM)
- RF Power: 11n: 13dBm; 11g: 13-15dBm, 11b: 16-18dBm
- Typical Distance: Indoor: 60m (max); Outdoor 150m (max) (with 2 dBi antenna)